

## TECHNICAL SPECIFICATIONS C-WALK

### HARDWARE:

#### General:

- Camera & detector board integrated in compact, esthetical housing
- Material:
  - Housing:
    - Aluminum, with integrated rain/sun shield (additional sunshield optional)
    - Window in glass
    - Screw Connectors:
      - BPL version: 1 connector with 3-pins for Broadband over Power Line (BPL)
      - ETH version: 1 connector with 3-pins for power supply and 1 connector with 8-pins for Ethernet (4), outputs (2) and not used pins (2)
  - Mounting Bracket: Aluminum tube; L = 25cm, Ø = 13mm
  - Mounting Piece:
    - U-profile, L = 18cm, glass fiber reinforced polyamide
    - Attached to mounting bracket
    - Retaining straps or bolts to be used for fixation
- Mass ≈ 880 g (excl. cable)
- Height x Width x Depth (max. dimensions, housing + mounting bracket):
  - Vertically mounted about 45 cm x 16 cm x 12 cm
  - Horizontally mounted about 41 cm x 18 cm x 12 cm
- Diameter: about 12 cm
- Temperature Range: from -34°C to +80°C
- Humidity: up to 95% non-condensing



#### Power Supply, Outputs & Communications:

- BPL version:
  - Broadband over Power Line (BPL) for power supply, communication of output status, configuration & monitoring (streaming video) via TI x-stream interface
  - Input Power 20VDC via TI x-stream interface
  - Current Consumption < 165mA @ 24VDC (Power Consumption ≤ 4,0W)
- ETH version:
  - Power supply separately and Ethernet for communication for configuration & monitoring (streaming video) with 1 optical coupled dry contact available
  - Input Power 12-48VAC/DC direct
  - Current Consumption < 125mA @ 24VDC (Power Consumption ≤ 3,0W)



#### Camera Details:

- Camera type:
  - Technology: Color CMOS
  - Sensor Size: 1/4 "
  - Resolution: 640 x 480 pixels (VGA)
  - Frame Rate: 25 FPS
- Lens types:
  - Wide Angle: Focal Distance 2,1mm
  - Narrow Angle: Focal Distance 6,0mm

Product type	Focal distance	Field of view	Effective horizontal detection distance
<b>Wide angle</b> (ETH version: 10-6048 and BPL version: 10-6042)	2,1 mm	Horizontal: 96° Vertical: 70°	0-10 m 2-12 m
<b>Narrow angle</b> (ETH version: 10-6049 and BPL version: 10-6043)	6,0 mm	Horizontal: 29° Vertical: 22°	10-20 m 15-25m

# TrafiCam C-WALK

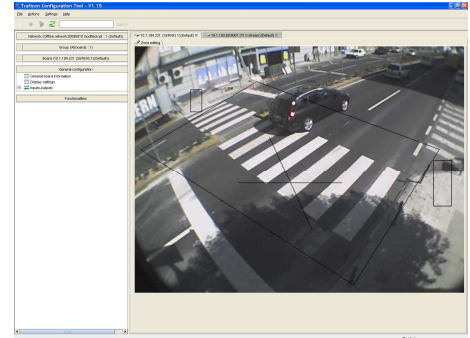
PEDESTRIAN PRESENCE SENSOR

TECHNICAL DATA SHEET

- **Video Compression:**
  - Type: MPEG-4
  - Frame Rate: up to 25FPS
  - Resolution: VGA (640x480)
  - Quality: up to 4Mbit/s
- **IP-addressable**

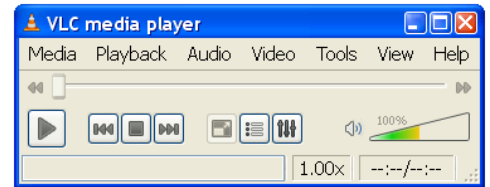
## REGULATORY ISSUES:

- **EMC:** Electromagnetic Compatibility - 2004/108/EG
- **FCC:** FCC Part 15 class A
- **Shock & Vibration NEMA II specs**
- **Materials:** all weatherproof (UV-resistant)
- **Protection Grades:** Housing = IP68, Connectors = IP67



## SOFTWARE:

- **TCT (Traficon Configuration Tool) on PC with LAN connection:**
  - Configuration via JPEG Snapshot
    - Detection Zone:
      - 1 “virtual loop” per C-Walk
      - Direction sensitive in 1 or 2 directions
    - Output assignment:
      - 1 detection output per C-Walk
      - Select “close on event” (= default setting) or “open on event”
        - BPL version: output generation via TI x-stream (EDGE)
        - ETH version: output generation direct (1 output) and/or via TCP/IP
  - View detection via MPEG-4 streaming video
- **VLC Media Player on PC with LAN connection:**
  - View MPEG-4 streaming video
  - Record MPEG-4 streaming video
  - Playback MPEG-4 streaming video



## CONNECTION C-WALK BPL – TI X-STREAM (EDGE):

- **Recommended type of cable:** power cable, signal cable or STP cable, UV resistant
- **Cable diameter\*:** 4-8 mm
- **Maximum cable length\*\*:** 300 m
- **Required number of wires:** 3 (+, -, PE)
- **Wire diameter\*\*\*:**
  - Min. 0,64 mm (0,32 mm<sup>2</sup>, AWG22) for up to 120 m cable length
  - Min. 0,8 mm (0,50 mm<sup>2</sup>, AWG20) for up to 200 m cable length
  - Min. 1 mm (0,75 mm<sup>2</sup>, AWG18) for up to 300 m cable length
- **Note:** cable is not included




\* Determined by the cable gland of the connector  
 \*\* Highly depends on cable quality and local conditions, i.e. local sources of interference  
 \*\*\* Significant voltage drop possible. Resistance of wire may not be more than 15 ohm for DC.

## CONNECTION C-WALK ETH – POWER SUPPLY:

- **Recommended type of cable:** same as previous

## CONNECTION C-WALK ETH – PC:

- **Recommended type of cable:** Industrial CAT5e cable (SF/UTP)

Distributed by:	<b>Head Office</b>
	179 Bartley Dr. Unit B Toronto, ON M4A 1E6 Phone 416 750-4646 Toll Free 877 750-4646 Fax 416 750-4649
www.tacel.ca	info@tacel.ca

Data subject to alternation without notice or obligation

Issue: v2 09/2010

