

TECHNICAL SPECIFICATIONS TRAFICAM X-STREAM

HARDWARE:

- In General:

- Camera & detector board integrated in compact, esthetical housing
- Material:
 - Housing:
 - Aluminum, with integrated rain/sun shield (optional: additional sunshield)
 - Window in glass
 - Screw Connectors:
 - BPL version: 3-pins for Broadband over Power Line (BPL)
 - ETH version: 3-pins for power supply, 8-pins for Ethernet (4) and outputs (4)
 - Mounting Bracket: Aluminum tube; L = 25cm, Ø = 13mm
 - Mounting Piece:
 - U-profile, L = 18cm, glass fiber reinforced polyamide
 - Attached to mounting bracket
 - Retaining straps or bolts to be used for fixation
- Mass ≈ 880 g (excl. cable)
- Height x Width x Depth (max. dimensions, housing + mounting bracket):
 - Vertically mounted about 45 cm x 16 cm x 12 cm
 - Horizontally mounted about 41 cm x 18 cm x 12 cm
- Diameter: about 12 cm
- Temperature Range: from -34°C to +80°C
- Humidity: up to 95% non-condensing



- Camera Details:

- Camera type:
 - Technology: Color CMOS
 - Sensor Size: 1/4 "
 - Resolution: 640 x 480 pixels (VGA)
 - Frame Rate: 25 FPS
- Lens types:
 - Wide Angle: Focal Distance 2,1mm
 - Narrow Angle: Focal Distance 6,0mm
 - ZOOM:
 - Focal Distance: 5mm to 15mm
 - Motorized zoom, zoom control via Traficon Configuration Tool (TCT)

- Power Supply, Outputs & Communications:

- BPL version:
 - Broadband over Power Line (BPL) for power supply, communication of output status, configuration & monitoring (streaming video) via interface
 - Input Power 20VDC via interface
 - Current Consumption < 165mA @ 24VDC (< 205mA @ 24VDC peak at start-up)
 - Power Consumption ≤ 4,0W (≤ 5W peak at start-up)
- ETH version:
 - Power supply separately and Ethernet for communication of output status, configuration & monitoring (streaming video), 3 optical coupled dry contacts also possible
 - Input Power 12-48VAC/DC direct
 - Current Consumption < 125mA @ 24VDC (< 165mA @ 24VDC peak at start-up)
 - Power Consumption ≤ 3,0W (≤ 4W peak at start-up)

- Video Compression:

- Type: MPEG-4
- Frame Rate: up to 25FPS
- Resolution: VGA (640x480)
- Quality: up to 4Mbit/s

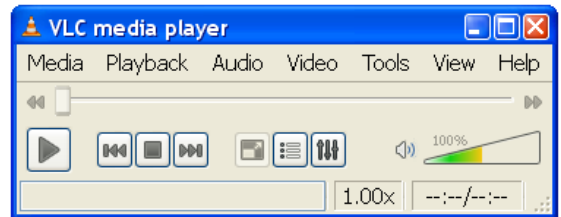
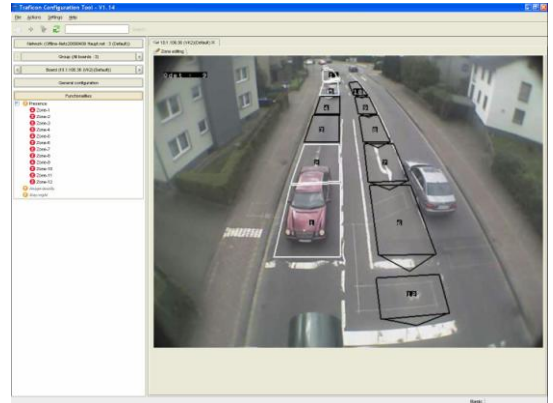
- IP-addressable

REGULATORY ISSUES:

- **EMC:** Electromagnetic Compatibility - 2004/108/EG
- **FCC:** FCC Part 15 class A
- **Shock & Vibration NEMA II specs**
- **Materials:** all weatherproof (UV-resistant)
- **Protection Grades:** Housing = IP68, Connectors = IP67

SOFTWARE:

- **TCT (Traficon Configuration Tool) on PC with LAN connection:**
 - o In case ZOOM lens: Zoom in, zoom out
 - o Configuration via JPEG Snapshot
 - Detection Zones:
 - Max. 24 “virtual loops” per TrafiCam x-stream for vehicle presence
 - Optional: Max. 8 “virtual loops” per TrafiCam x-stream for traffic data
 - Virtual loops can be made direction sensitive
 - Output assignment:
 - Max. 16 detection outputs available per TrafiCam x-stream
 - An output can be assigned to multiple zones (logical functions: and, or)
 - Select “close on event” (= default setting) or “open on event”
 - BPL version: output generation via interface
 - ETH version: output generation direct (max. 3 outputs) and/or via TCP/IP
 - o View detection via MPEG-4 streaming video
- **VLC or QuickTime Media Player on PC with LAN connection:**
 - o View MPEG-4 streaming video
 - o Record MPEG-4 streaming video
 - o Playback MPEG-4 streaming video



CONNECTION TRAFICAM X-STREAM ZOOM BPL – INTERFACE:

- **Recommended type of cable:** power cable, signal cable or STP cable, UV resistant
- **Cable diameter*:** 4-8 mm
- **Maximum cable length**:** 300 m
- **Required number of wires:** 3 (+, -, PE)
- **Wire diameter***:**
 - o Min. 0,64 mm (0,32 mm², AWG22) for up to 120 m cable length
 - o Min. 0,8 mm (0,50 mm², AWG20) for up to 200 m cable length
 - o Min. 1 mm (0,75 mm², AWG18) for up to 300 m cable length
- **Note:** cable is not included

* Determined by the cable gland of the connector
 ** Highly depends on cable quality and local conditions, i.e. local sources of interference
 *** Significant voltage drop possible. Resistance of wire may not be more than 15 ohm for DC.



CONNECTION TRAFICAM X-STREAM ZOOM ETH – POWER SUPPLY:

- **Recommended type of cable:** same as previous

CONNECTION TRAFICAM X-STREAM ZOOM ETH – PC:

- **Recommended type of cable:** Industrial CAT5e cable (SF/UTP)



YOUR CONTACT

Distributed by:		Head Office
		179 Bartley Dr. Unit B
		Toronto, ON M4A 1E6
		Phone 416 750-4646
		Toll Free 877 750-4646
www.tacel.ca info@tacel.ca		Fax 416 750-4649

