

NEMA TS-2 Type 1 & 2 Traffic Signal Controller

Advanced Transportation Controller (ATC)



Linux Operating System with
64 MB SDRAM | 64 MB Flash Memory and
MPC 8248 32-bit Processor (750 MIPs)

ATC / 2070 Standard
Module Expansion Bay

16 Line x 40 Character LCD OR
7" Color Touch Screen with
Android Operating System (X3c)

Modular CPU
w/Four-Port
Ethernet Switch,
USB Port, Data Key,
and Serial Port

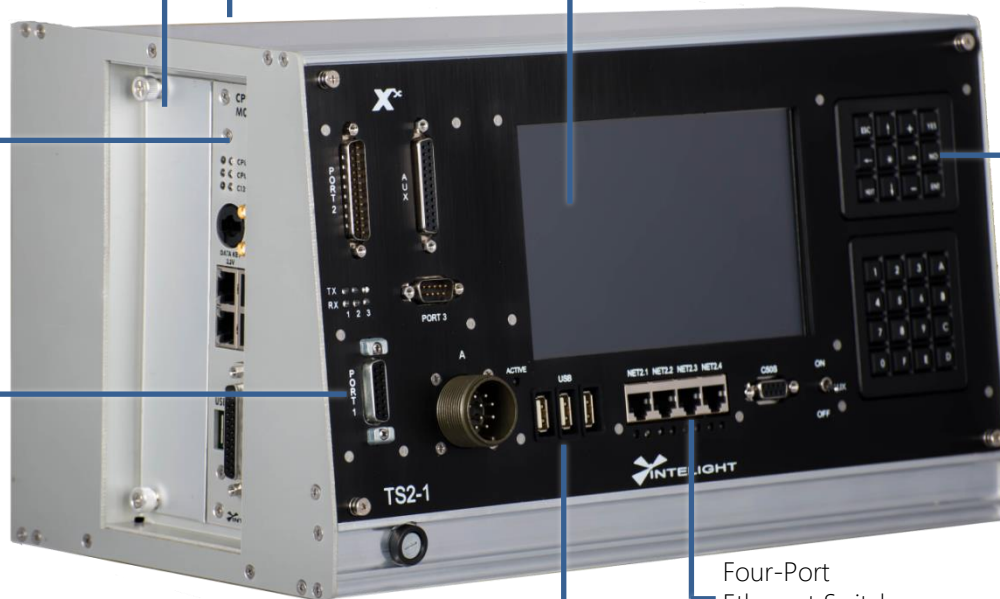
Weather Resistant
Tactile Keypad

NEMA TS-2,
Type 1
SDLC Port

NEMA TS-2, Type 2 (TS-1)
'A,B,C' Mil. Spec. Connectors
'D' Connector TEES 2009 Compliant (X3 Typ 2)

Four-Port
Ethernet Switch
w/2 Subnets

Three-Port
USB Hub



OVERVIEW

The X-3 Controller is part of Intelight's award winning "X-Series" NEMA Controller Line. The X-3 meets and exceeds the current ATC, NEMA, and NTCIP standards providing agencies with a robust, industry leading, true open architecture hardware platform. The X-3 can help agencies organize and improve operations and reduce the amount of equipment in the signal cabinet. Use the X-3 to manage Ethernet traffic, monitor CCTV or Detection camera video, enter cabinet and maintenance logs directly into the controller (syncs with Central), and integrate with other products via android applications, all while running traffic signal operations. Contact Intelight today to see how the X-3 Controller can help update your signal operations system to 21st century technology.

HIGHLIGHTS

- Compliant with NEMA TS-2 and ATC 5.2b and 6.2 (latest draft) Standards
- Linux Operating System
- Optional Color Touch Screen with Android O/S (X3c)
- Two Independent 10/100 Mbit Network Cards
- TS-1 and/or TS-2 Operation (Requires Type 2)
- Supports Serial and/or Ethernet Communications
- 2070 Hardware Expansion Bay for Device Integration
- MaxTime Local Controller Software
 - 40 Phases, 16 Rings, 32 Overlaps, 16 Preempts
 - Monitor and configure timings wirelessly from a laptop, tablet, or smart-phone without database editor or 3rd party software
 - Built-In Master/Closed Loop Functionality
 - Peer to Peer communications
 - Locally Adaptive Transit Prioritor

MODERN PLATFORM

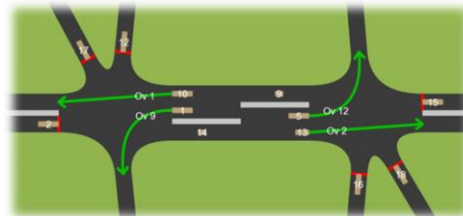
- Supported Standard Specifications:
 - ATC v5.2b and 6.2 (latest draft)
 - API (FIO & FP Interface)
 - NEMA TS2 with NTCIP (Type 1 & Type 2)
 - NTCIP – 1202 ASC, 1201, and Base Stds.
- Open Architecture
 - Linux Operating System
 - Optional Google Android™ O/S (Front Panel)
- Faster processing and more controller memory
 - Motorola PowerPC 8248 32-bit (750 MIPS at 400 MHz) Processor
 - (64MB Flash / 64MB DRAM)
- Two Independent Network Cards
 - Four 10/100 Mbit Ethernet Ports
- Three-Port USB Hub + CPU mounted USB
- Six Config. Serial Ports (5 are SDLC Capable)
- ATC/2070 Comm./Modem Slot
 - Optional 2070-6A/B, 2070-7A/B Modules
 - Optional 2070-7T w/GPS Time Clock Module
- On-Board Video Support via Android App.
 - Remote display of IP-based video streams
 - Quad View or Sequence Video Streams

ROBUST HARDWARE

- Built with current, industry standard technology
- Compliant with NEMA Environmental Requirements
 - Temp Range: -40°C to +80°C
 - TS-2 Type 1 Size: 8.5”H x 8.5”D x 14 ¾”L
 - TS-2 Type 2 Size: 10 ¾”H x 8.5”D x 14 ¾”L
 - Two-port 10/100 Mbit Ethernet ports
 - Variable Power Supply (95-250 VAC 50/60 Hz auto sensing)

FEATURES & USABILITY

- On Board Web-Server - Monitor and manage traffic signal without the need for additional software



Sample MaxTime Status Display as Viewed from Front Panel, Tablet or Smart-Phone (No App Required)

- Optional Front Panel Color Video Screen (X3c)
 - Configure and Monitor Signal in Rich UI
 - 7” Touch Screen, 640 x 480 Res.
 - Supports Android Applications
- Eight Programmable “Special Function Key Sequences” provide shortcuts to software menus
- USB Support
 - Install traffic signal software from flash drive
 - Transfer timing databases via flash drive
 - Configure and monitor timings via Wi-Fi adapter from computer, tablet, or smart phone without additional software or database editor
- Live Software Update
 - Schedule Software Updates
 - Download Update Package Remotely
 - Perform Firmware AND Operating System Updates without Placing Controller in Flash



Android Front Panel: MaxTime Main Menu

* Indicates Extended/Optional Feature

Distributed by:



Head Office

179 Bartley Dr. Unit B
 Toronto, ON M4A 1E6
 Phone 416 750-4646
 Toll Free 877 750-4646
 Fax 416 750-4649

www.tacel.ca info@tacel.ca



Intelight, Inc. • 3450 S. Broadmont Dr. • Suite 126 • Tucson, AZ 85713 • Phone: 520.795.8808 • info@intlelight-its.com

All information and specifications are subject to change without notice. Registered names and trademarks are owned by their respective owners.