

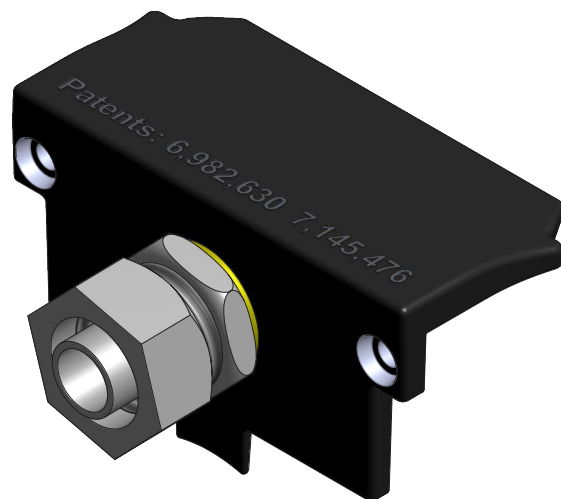
EZ521 – EZ Communicator Navigator Bottom Cover with Conduit Fitting

Mounting an EZ Communicator Navigator Push Button Station (EPBS) onto a solid surface requires using an EZ521 Bottom Cover with Conduit Fitting. This permits the field installer to easily connect the wiring to the EPBS. The EZ521 works with both the 2-wire and 4-wire versions of EPBSs. All hardware and instructions necessary to connect to standard flexible conduit is supplied with the EZ521.

Cover Material: Aluminum, Powder Coated

Conduit Fitting: Standard 1/2" Straight Liquid Tight

Warranty: 2 Years, free from manufacturers defects



Installation Instructions:

1. Attach the EPBS and the conduit to the desired surface. Conduit should extend approximately 18 inches past the bottom of the EPBS to form a drip loop (Fig. 1).
2. Drill 3 weep holes in the bottom radius of the conduit drip loop (Fig. 1).
3. Attach the conduit to the conduit fitting on the EZ521 with 3 to 6 inches of wire protruding. Remove approximately 1/4 inch of outer jacket from each of the conductor wires (Fig. 2).
4. Remove and discard the cover and screws supplied with the EPBS.
5. Connect the wires to the terminal block (Fig. 3).
6. Fasten the EZ521 to the EPBS with the supplied screws (bits and extra screws are supplied) (Fig. 4).

Product Ordering Information:

EZ521-B	Black Body
EZ521-G	Green Body
EZ521-Y	Yellow Body



Fig. 1

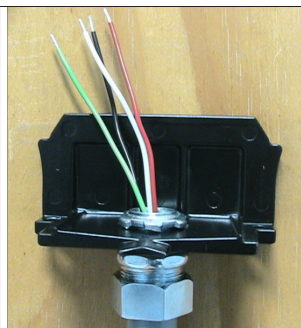


Fig. 2

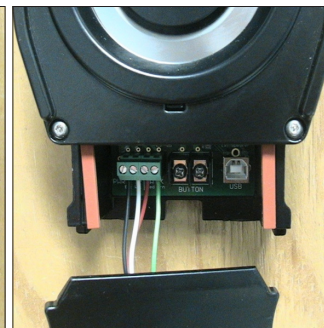


Fig. 3

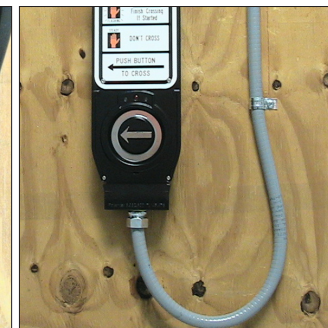


Fig. 4